

# How to use Infinity-Box with external Pinout Detection Device (Pin-Finder)

How to use Infinity-Box with external Pinout Detection Device (Pin-Finder).....	1
Preface.....	1
What type of Hardware you can use with Infinity-Box software:.....	1
Contacts:.....	1
Products:.....	1
Instruction.....	2

## Preface

You can use your Infinity-Box software with any type of your existing Cables and/or Boxes and Pinout Detection Device (Pin-Finder) that use virtual COM port.

## What type of Hardware you can use with Infinity-Box software:

Different Pinout Detection Devices like UCT/CPF/Spider/Dragon/AvatorBox/MTK-Box/T-box/Volcano and any other similar hardware products.

## Contacts:

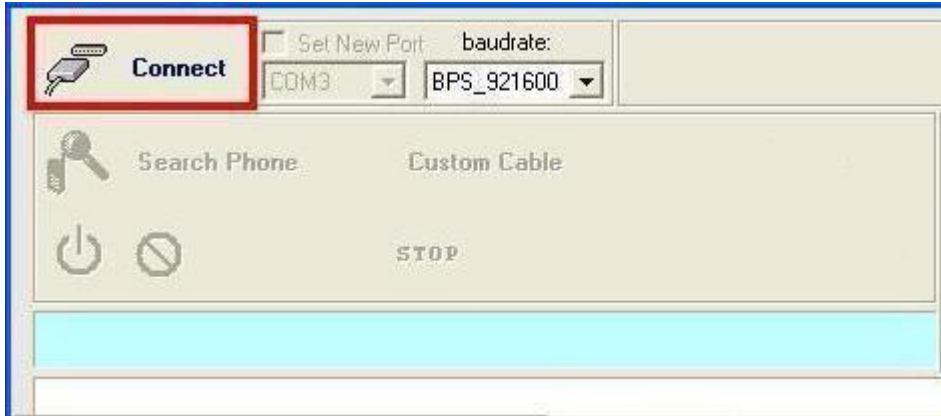
Infinity-Box corporate web-site: [www.infinity-box.com](http://www.infinity-box.com)  
Infinity-Box sales department: [sales@infinity-box.com](mailto:sales@infinity-box.com)

## Products:

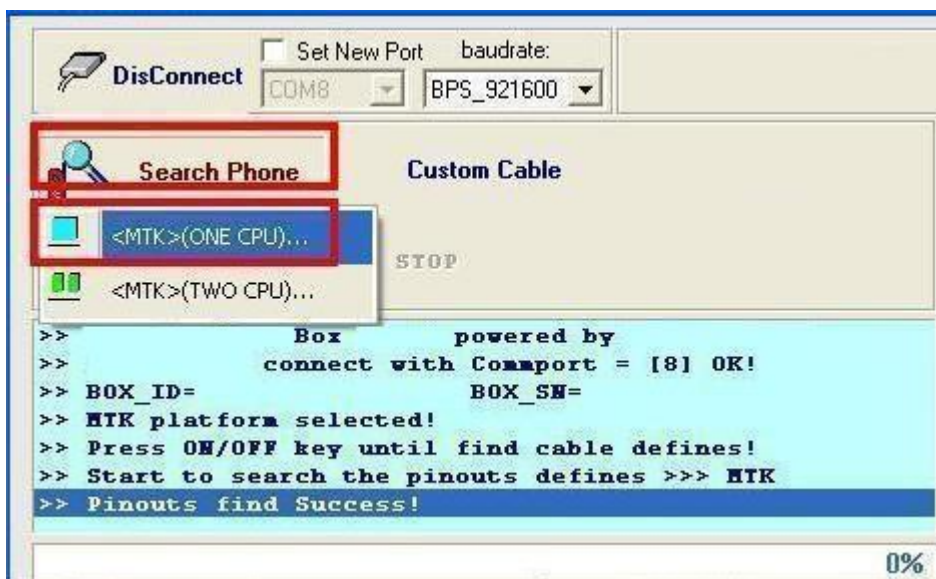
Main Infinity-Box & Infinity Dongle: [www.infinity-box.com](http://www.infinity-box.com)  
BB5 Easy Software Tool [BEST]: [www.infinity-best.com](http://www.infinity-best.com)  
CDMA-Tool Dongle: [www.infinity-cdma.com](http://www.infinity-cdma.com)  
Content Extractor Dongle: [www.content-extractor.com](http://www.content-extractor.com)

## Instruction

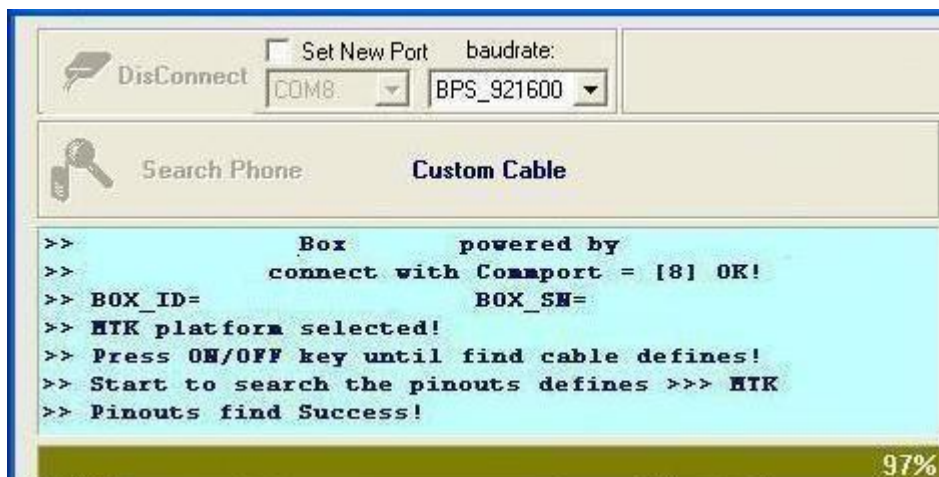
1. Connect Pinout Detection Device to PC, run pinout detection software and click to "**Connect**" button



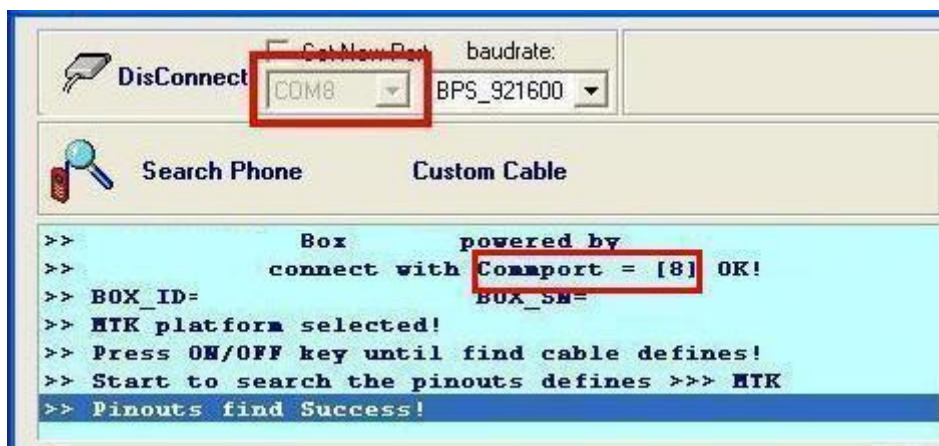
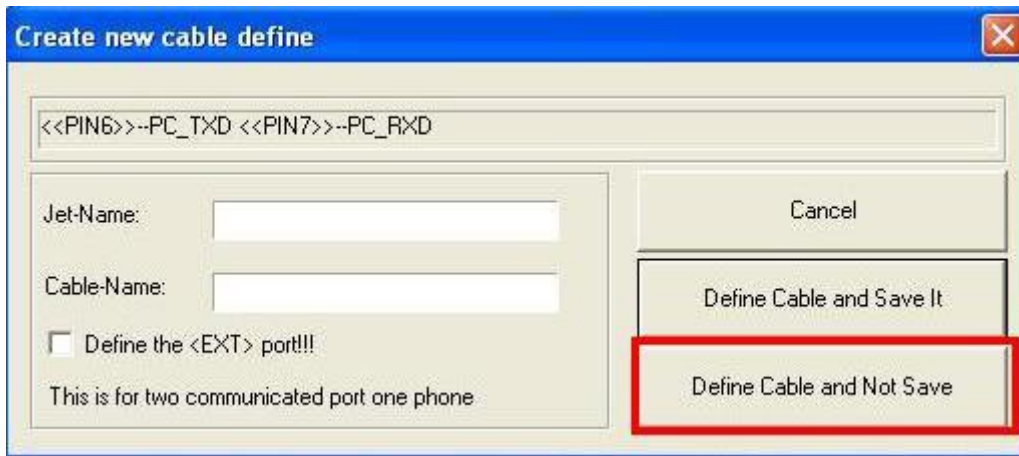
2. Click to "**Search Phone**" and select "**MTK (ONE CPU)**"



3. While progress bar is moving push phone "**Power**" button



4. After pinout was found click to "**Define Cable and Not Save**"



5. Run **Infinity-Box** software, select the same "**COM port**" that was selected in previous step and use Infinity-Box software as ordinary:

